

FRAMING PLAN

NOTES

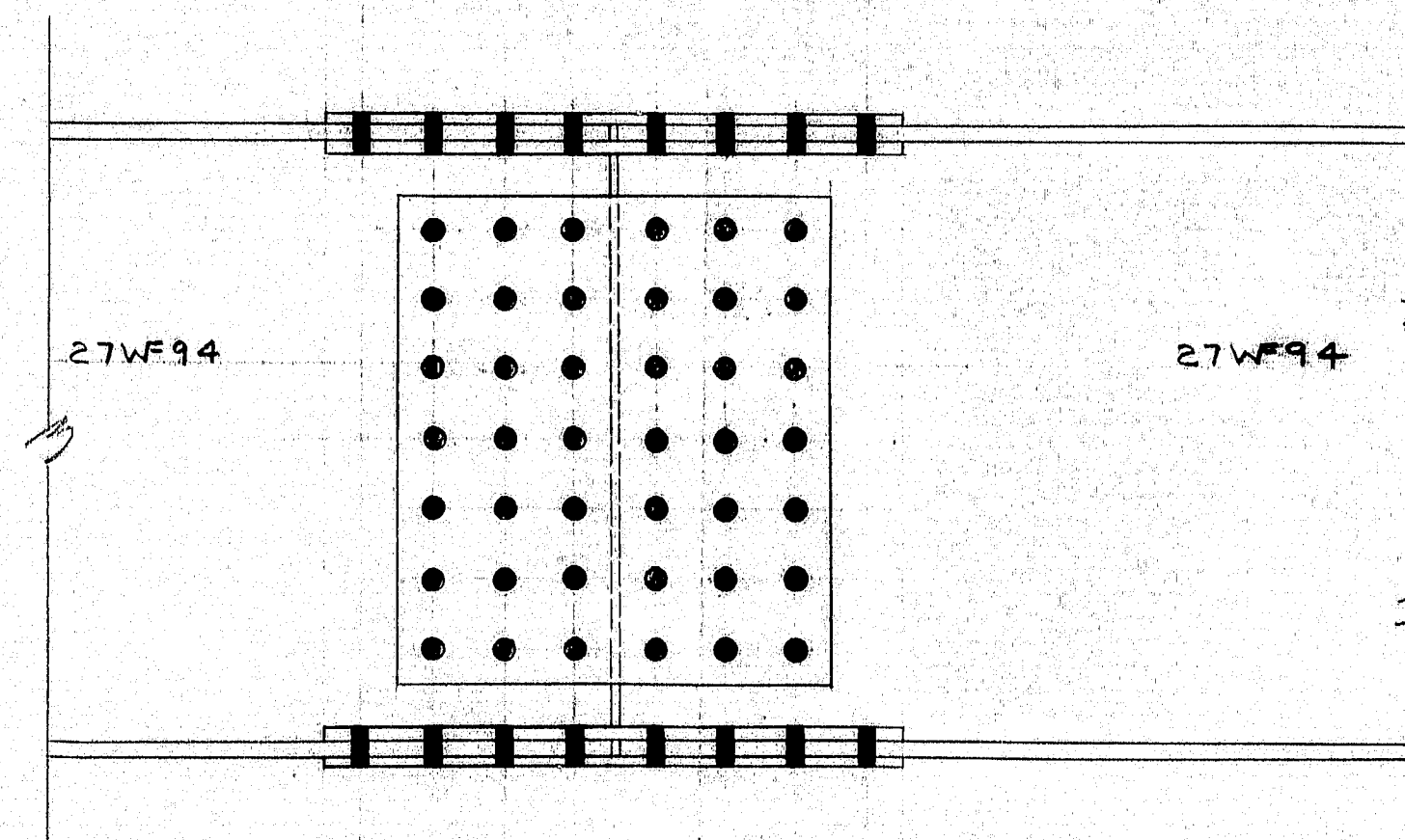
All structural steel shall conform to the latest revision of the specification ASTM A36 unless otherwise noted on standard details.

Bolts for splices shall be ASTM A-325 7/8" heavy hexagon structural bolts with heavy semi-finished hexagon nuts and one hardEd washer.

Holes in stringers are for high strength bolts, they are to be free from burrs, there shall be no paint within three inches of such holes.

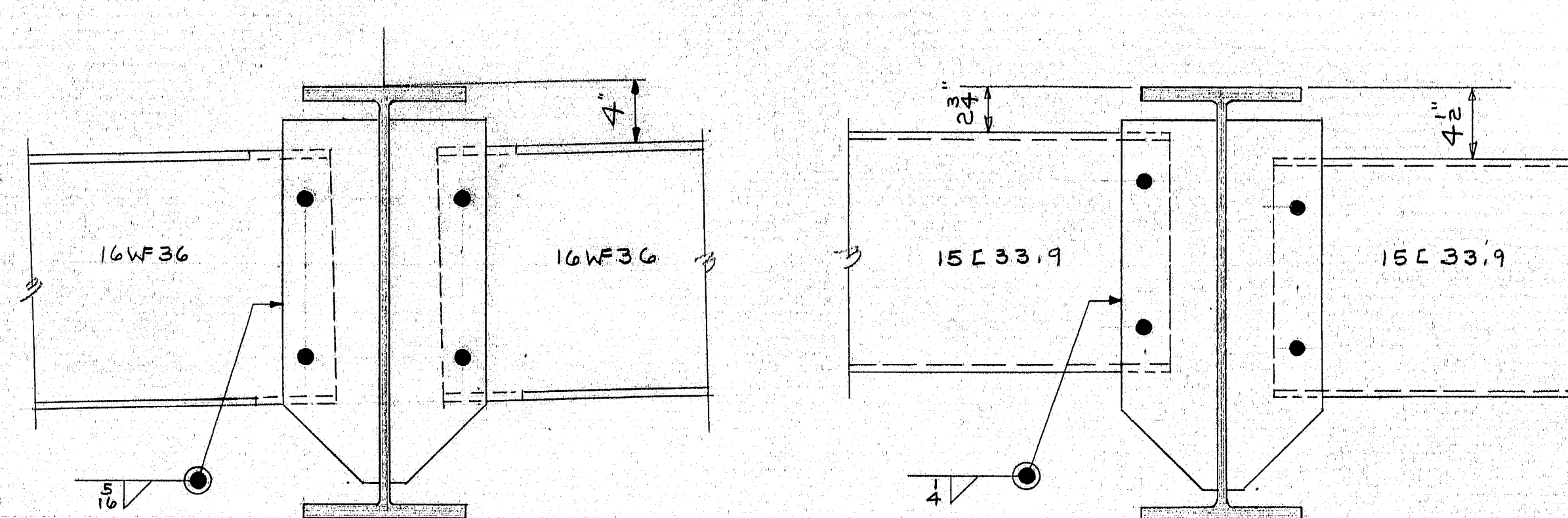
Sub punch or drill 11/16"; ream assembled (not with template) parts to be connected in the field to 15/16" or drill from solid. Match mark all connecting parts before disassembling and supply the engineer with a diagram showing match marks.

Fabricate and erect in accordance with M.S.H.C. standard specifications.



SPICE DETAIL

74 - 3" x 3" H.S. BOLT FOR EACH SPICE



DIAPHRAGM CONNECTIONS

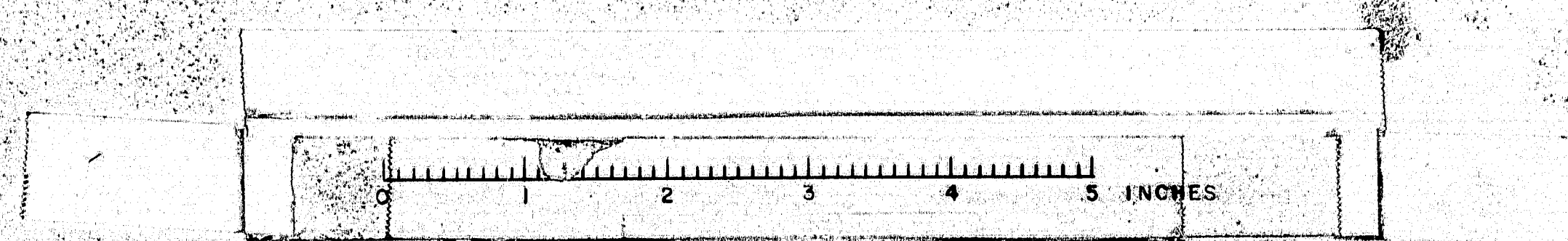
SHOP CONNECTIONS:  
FIELD CONNECTIONS:  
HOLES:  
PAINT:

APP'D AS NOTED 11/13/64

FRAMING PLAN

PRINT ISSUE		Bancroft & Martin Inc. Brewer, Maine	
REVISION	DATE		
2	SHC 12-7-64	INT. 95 OVER MATTAMISCONTIS STR'M, TOWNSHIP 2, RANGE 8 MAINE	
3	CUST. 12-7-64		
1	SHOP 12-7-64		
2	F.A. 11-6-64	CUSTOMER C.W. BAGLEY	
DRAWN	11-5-64 D.C.	DESIGNER STATE HIGHWAY COMM.	
REVISION		ORDER	
REVISION		DWG. B64-404-E1	

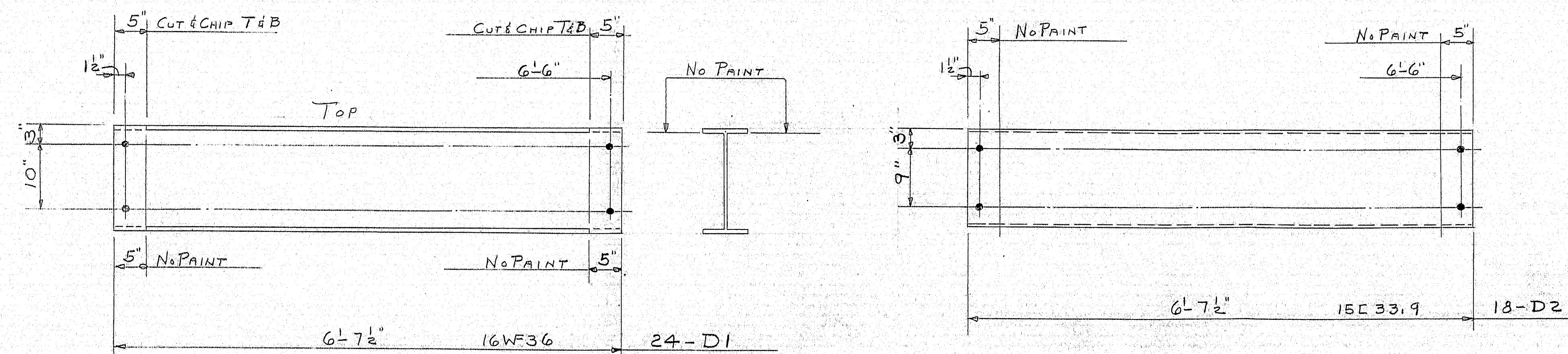
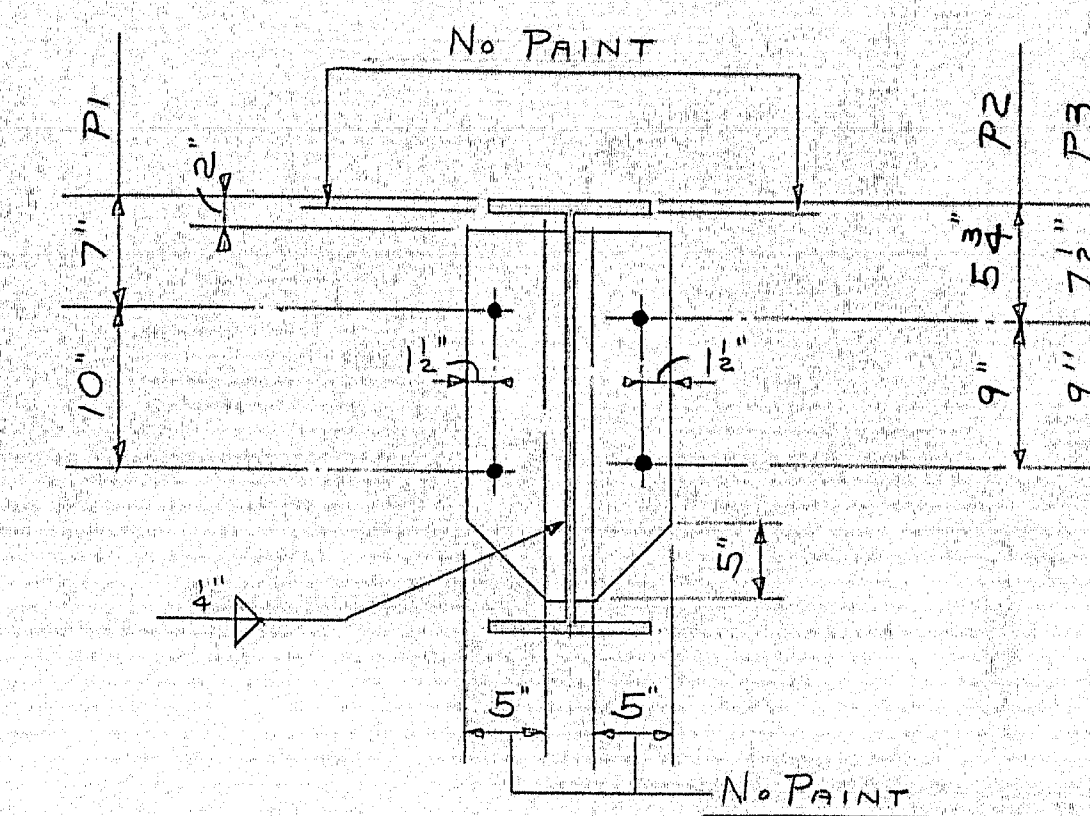
95-1







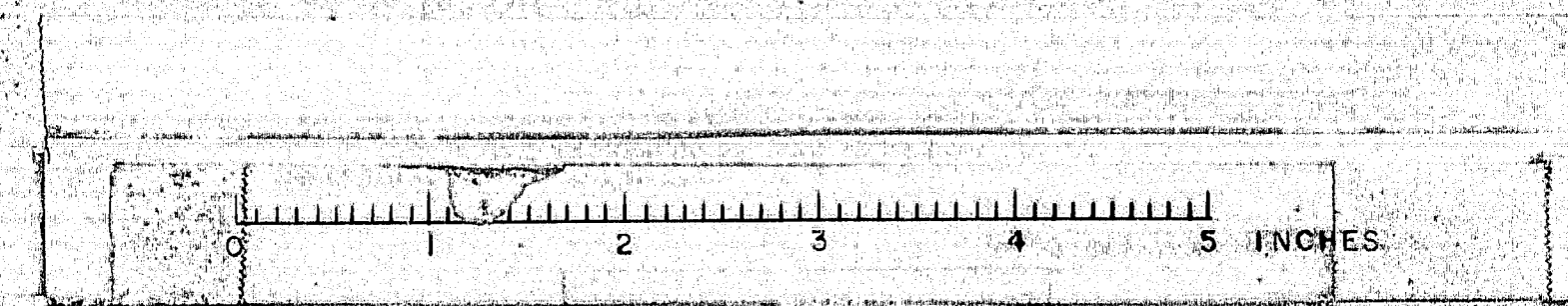




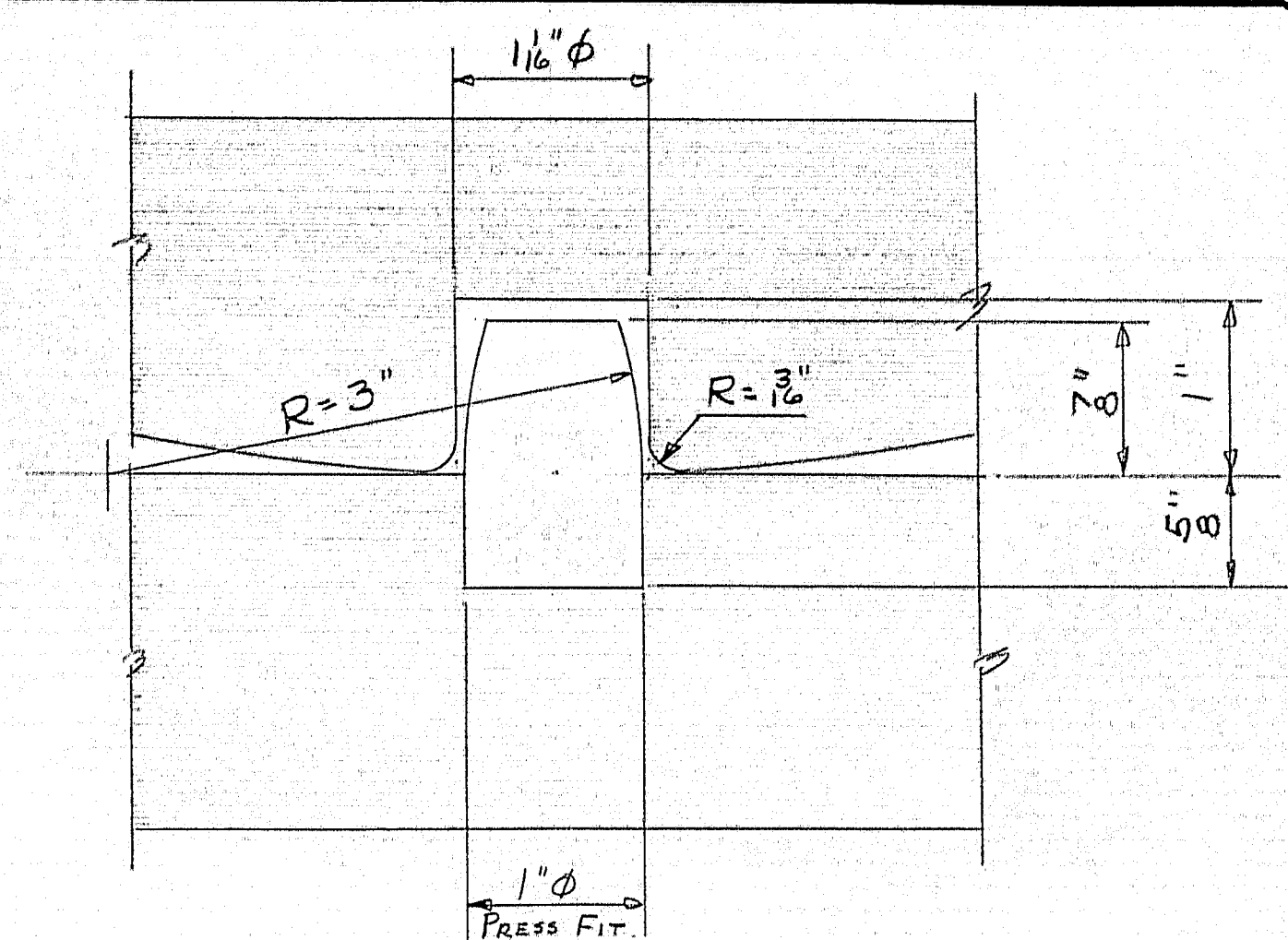
SHOP CONNECTIONS: WELD (E70-LOW HYDROGEN)  
FIELD CONNECTIONS: WELD  
HOLES: 1/2"  $\phi$   
PAINT: STATE OF ME. SPEC'S.

## STRINGERS & DIAPHRAGMS.

PRINT ISSUE		<i>Bancroft &amp; Martin Rollings Mills Company</i> <i>Brewer, Maine</i>	
2	S.H.C.	12-7-64	INT. 95 OVER MATTAMISCONTIS STREAM TOWNSHIP 2, RANGE 8      MAINE
3	C&T	12-7-64	
5	S&P	12-7-64	
2	F.A	11-6-64	
DRAWN	11-5-64	D.C.	CUSTOMER <u>C.W. BAGLEY</u> DESIGNER <u>STATE HIGHWAY COMM.</u>
REVISION			ORDER VERBAL _____ DWG. <u>B64-404-S2</u>
REVISION			
REVISION			
REVISION			







SHOP CONNECTIONS: WELD (E70-LOW HYDROGEN)  
FIELD CONNECTIONS: WELD  
HOLES: AS NOTED  
PAINT: STATE OF ME. SPEC'S.

## BEARING PEDESTALS

PRINT ISSUE			<i>Bancroft &amp; Martin Rollings Mills Company</i> <i>Brewer, Maine</i>
2	5HC	12-7-64	I95 OVER MATTAMISCONTIS STREAM TOWNSHIP 2, RANGE 8      MAINE
3	CUST.	12-7-64	
4	PORT	12-7-64	
2	F.A.	11-6-64	
DRAWN	11-6-64	D.C.	CUSTOMER <u>C. W. BAGLEY</u> DESIGNER <u>STATE HIGHWAY COMM.</u>
REVISION			ORDER <u>VERBAL</u> DWG. <u>B64-404-53</u>
REVISION			
REVISION			

